

# Professional Trellising Kit (PTK)



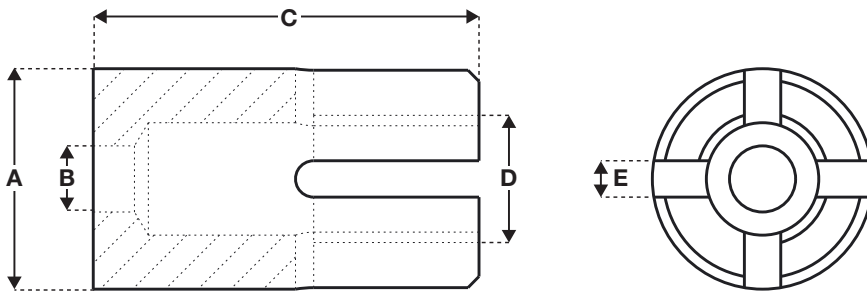
Strong, discreet framework to support wall vegetation growth; ideal for hobby gardeners and professional landscapers.

## FEATURES / BENEFITS

- **Time-saving** - fast trellis solution ideal for 'green wall' applications
- **Long-lasting** - available with galvanised or stainless steel wire rope
- **Easy-to-use** - fast installation facilitated by the wall hub which ensures sufficient space between the wall and the vegetation
- **Secure** - join and tension wire with Gripple Plus wire tensioners
- **Compatible** - available in two wire rope sizes; 2 mm and 3 mm, with a 50 m length of wire rope
- **Versatile** - create many different design variations
- **Safe** - rubber wire caps prevent injuries and protect the ends of the wire, once cut to size.



## SPECIFICATIONS



Dimension	Length
A	Ø 20 mm
B	Ø 6 mm
C	35 mm
D	M12
E	3,3 mm

The wall hub is made from 304 stainless steel.

## INSTALLATION TOOLS



Wire  
Cutter



Torq  
Tensioning  
Tool

For more information contact us or visit our website - [www.gripple.com](http://www.gripple.com)

## KIT CONTENTS



Wall Hub



Gripple Plus



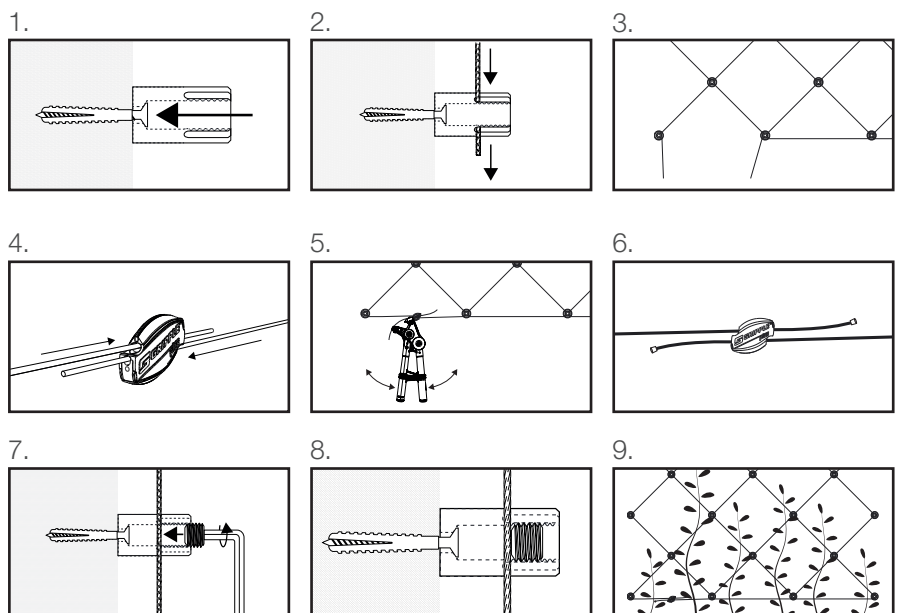
Wire  
Rope



Wire Cap

For more information contact us or visit our website - [www.gripple.com](http://www.gripple.com)

## INSTALLATION



For additional installation instructions, visit [www.gripple.com](http://www.gripple.com) and search 'Professional Trellising Kit'. Alternatively see Installation Guidelines & Procedures.

PI-PTK-ENG-EU

[www.gripple.com](http://www.gripple.com)

Gripple's policy is one of continuous development and innovation. We therefore reserve the right to alter specifications, etc. without notice.

Gripple Europe SARL | 1, rue du commerce | BP 37 | 67211 Obernai Cedex | France  
Tel +33 (0)3 88 95 44 95 Fax +33 (0)3 88 95 08 78 email [info@gripple.com](mailto:info@gripple.com)